

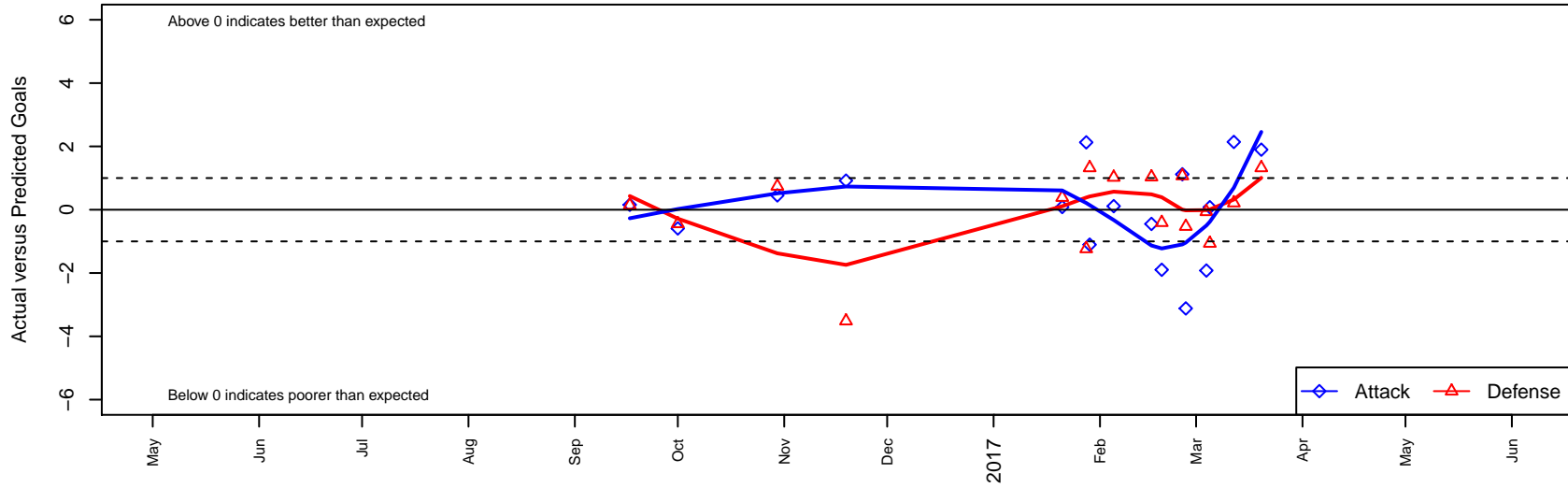
Portland Timbers Academy B02

, OR
 B02 total strength=1641
 attack=18.83 defense=18.06
 spr league = Win OYS B02 Premier Green

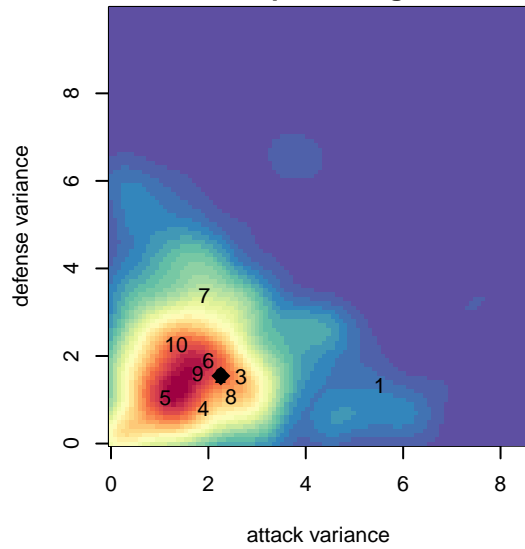
alt names used:
 Timbers Academy 02B
 Timbers Academy 02B FWRL
 Timbers Academy 02B

Venues played:
 2016 FWRL B02
 2016 Win OYS B02 Premier Green

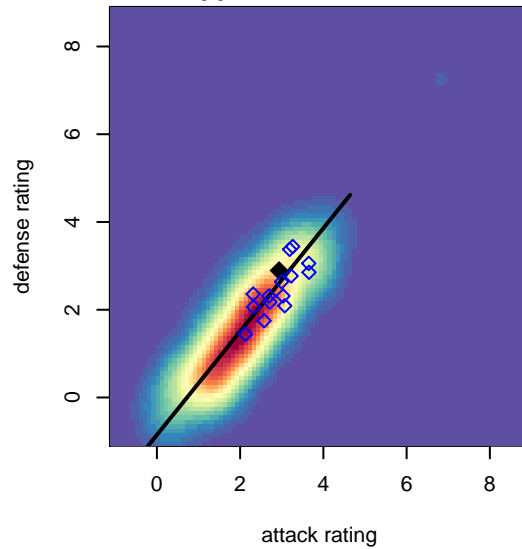
Portland Timbers Academy B02
 Dots are actual minus expected GF (blue circles) and GA (red triangles).
 Blue line is smoothed change in attack strength. Red is smoothed change in defense strength.



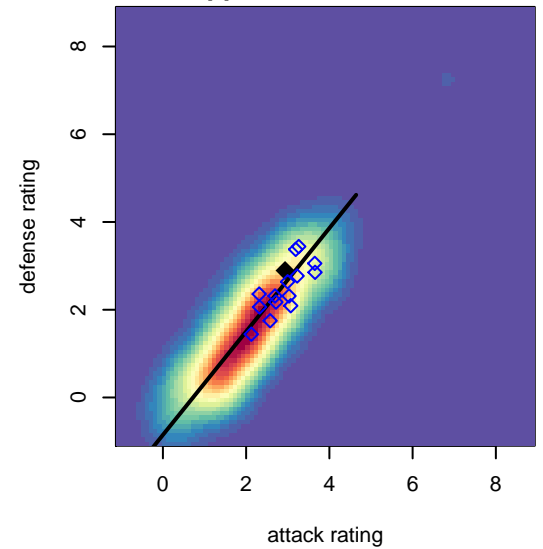
**attack and defense variance (black dot)
relative to other teams
and top 10 in region**



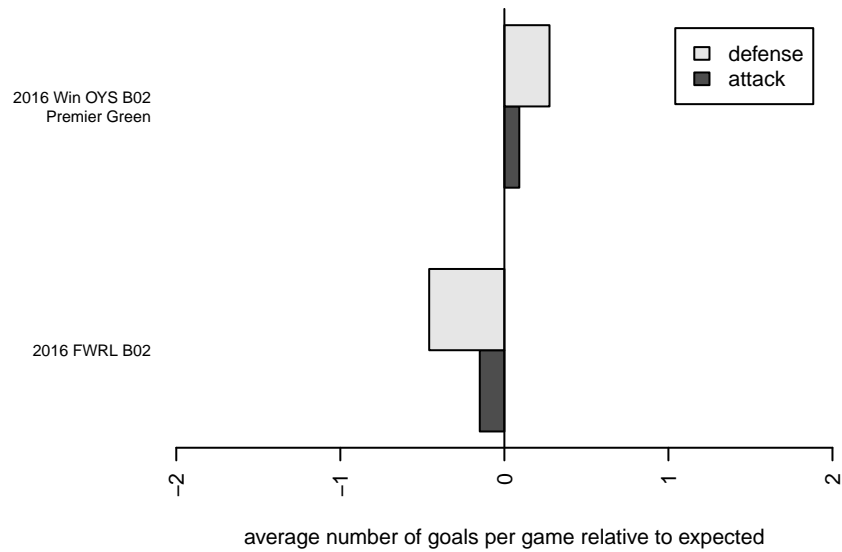
**attack and defense rating
relative to others at age
and all opponents in last 13 months**



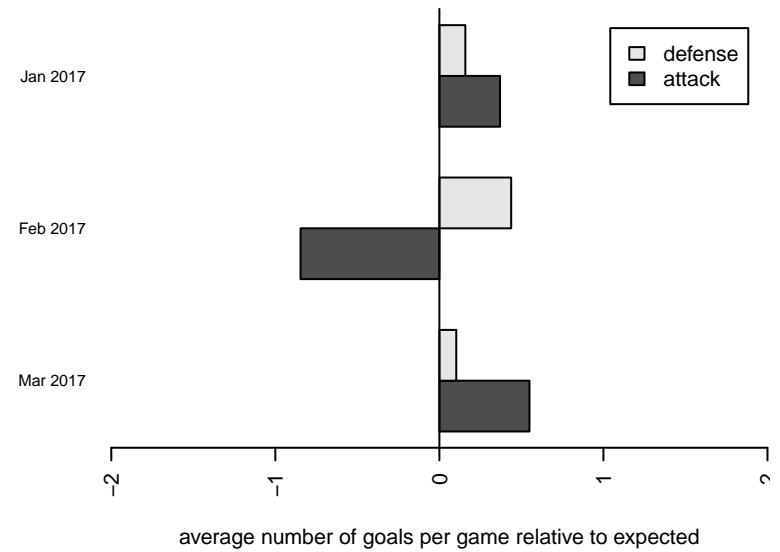
**attack and defense rating
relative to others at age
and all opponents in last 13 months**



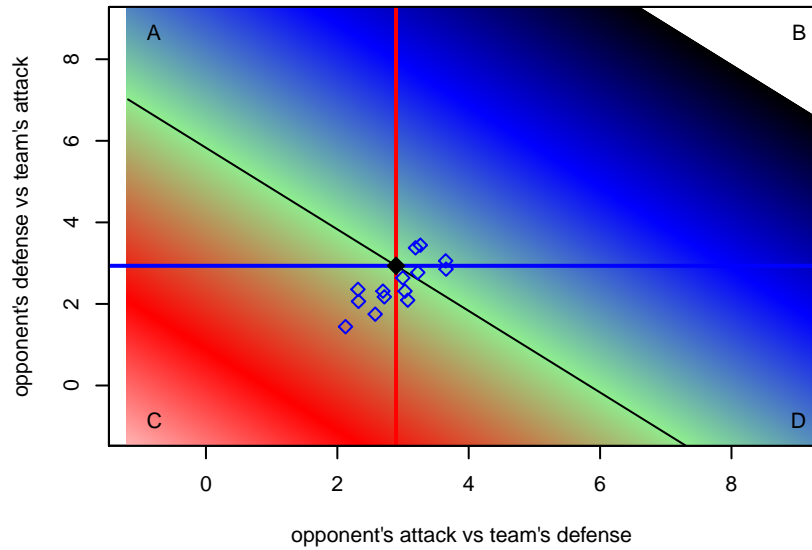
Performance relative to 13 month average



Performance relative to 13 month average



Distribution of opponents
 Red = Lose zone, Blue = Win zone, Green = Even
 Black line separates win/lose zones



lot. A=Neither has attack advantage, B=Opponent has both attack and defense advantage, C=Opponent has both attack and defense disadvantage, D=Both have

date	home		away		venue	pred.home	pred.away
2017-03-20	Portland Timbers Academy B02	3	Westside Timbers Copa Red B02	0	2016 Win OYS B02 Premier Green	1.10	1.32
2017-03-12	Portland Timbers Academy B02	4	Capital FC Timbers Red B02	1	2016 Win OYS B02 Premier Green	1.86	1.21
2017-03-05	Westside Timbers Copa White B02	2	Portland Timbers Academy B02	2	2016 Win OYS B02 Premier Green	0.94	1.92
2017-03-04	Portland Timbers Academy B02	0	Westside Timbers Copa White B02	1	2016 FWRL B02	1.92	0.94
2017-02-26	ETFC Dortmund Black B02	1	Portland Timbers Academy B02	2	2016 Win OYS B02 Premier Green	0.47	5.12
2017-02-25	Southside SC Azul B02	0	Portland Timbers Academy B02	3	2016 Win OYS B02 Premier Green	1.07	1.88
2017-02-19	LASC Cuervos B02	1	Portland Timbers Academy B02	0	2016 Win OYS B02 Premier Green	0.59	1.90
2017-02-16	Portland Timbers Academy B02	1	Eastside Timbers Red B02	0	2016 Win OYS B02 Premier Green	1.45	1.03
2017-02-05	Portland Timbers Academy B02	3	River Plate SC River A B02	0	2016 Win OYS B02 Premier Green	2.89	1.02
2017-01-29	Westside Timbers Copa Red B02	0	Portland Timbers Academy B02	0	2016 Win OYS B02 Premier Green	1.32	1.10
2017-01-28	Portland Timbers Academy B02	5	FC Portland Navy B02	2	2016 Win OYS B02 Premier Green	2.87	0.76
2017-01-21	PacNW Maroon B02	2	Portland Timbers Academy B02	1	2016 FWRL B02	2.39	0.91
2016-11-19	WPFC Black B02	6	Portland Timbers Academy B02	2	2016 FWRL B02	2.48	1.08
2016-10-30	Seattle United Copa B02	1	Portland Timbers Academy B02	1	2016 FWRL B02	1.74	0.55
2016-10-01	GS Surf A B02	2	Portland Timbers Academy B02	0	2016 FWRL B02	1.56	0.59
2016-09-17	Eastside FC Red B02	1	Portland Timbers Academy B02	2	2016 FWRL B02	1.14	1.84